



# TOWER HOUSE

10 SOUTHAMPTON STREET  
COVENT GARDEN  
CITY OF WESTMINSTER  
LONDON · WC2E 7HA

A most stunning  
office building  
inside and out.

4,178 sq.ft.  
**TO LET**







# TOWER HOUSE

10 SOUTHAMPTON STREET  
COVENT GARDEN  
CITY OF WESTMINSTER  
LONDON · WC2E 7HA



*view of building from Maiden Lane*



*main entrance*



*double height reception with new furniture and lighting*

## LOCATION

Tower House is located in the heart of London on the east side of Southampton Street in Covent Garden, served by the Piccadilly line and Charing Cross (Northern and Bakerloo line) underground stations. Waterloo Bridge is closeby. Part of the office overlooks The Strand and The Savoy in this vibrant and dynamic part of Central London.



*7th floor reception area*



*8th floor terrace*



*terrace view towards The London Eye and West End*



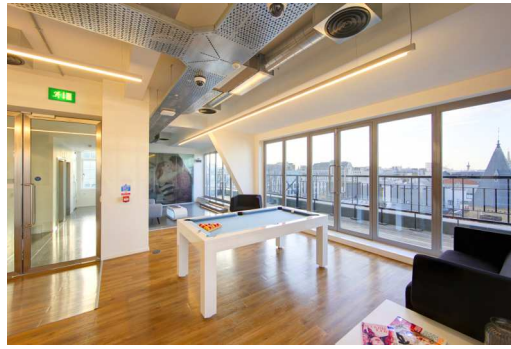
# TOWER HOUSE

10 SOUTHAMPTON STREET  
COVENT GARDEN  
CITY OF WESTMINSTER  
LONDON · WC2E 7HA

## AMENITIES

Available as 'plug & play'  
space with:

- Mechanical fresh air
- Full access raised floors
- Exposed services
- Cat 5E cabling
- Server room
- Meeting rooms
- Kitchenette
- Suspended lighting
- Views across London on the 8th Floor terrace and octagonal meeting room
- 7th Floor overlooking The Strand and The Savoy
- Contemporary double height generous reception
- Feature glazing
- 2 passenger lifts and 1 goods lift
- Commissionaire
- 24 hour access
- DDA compliant
- EPC: C 68
- Furniture available



7th floor reception area leading out to the terrace

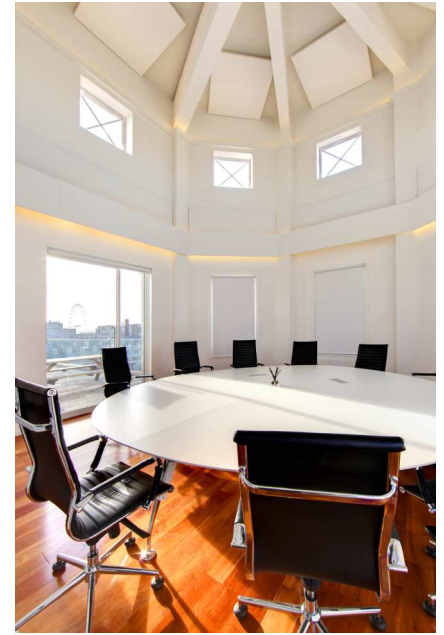
## ACCOMMODATION

Fully fitted offering the 7th Floor (and 8th floor meeting room) providing the following floor areas:

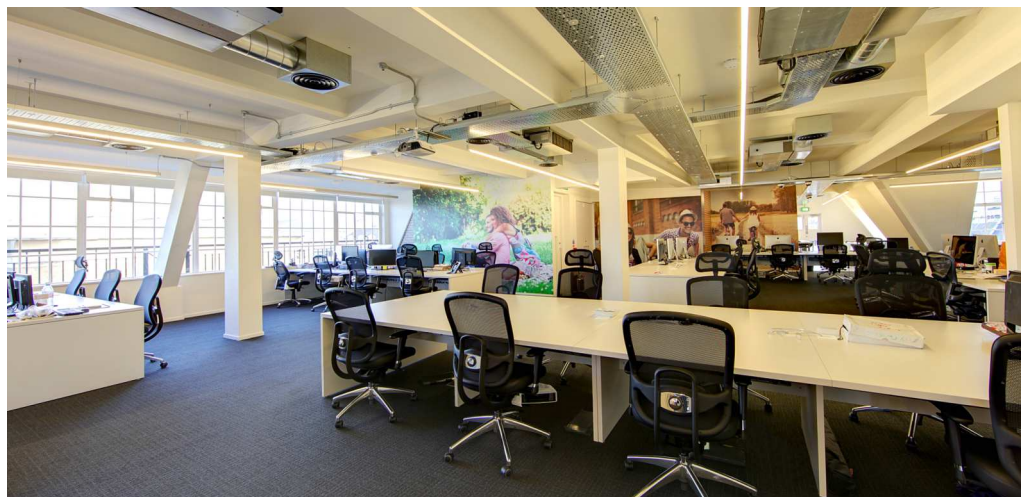
8th floor	354 sq ft	33 sq m
7th floor	3,824 sq ft	355 sq m

**Total 4,178 sq ft 388 sq m**

floor areas are for guidance only



8th floor double height tower overlooking The London Eye



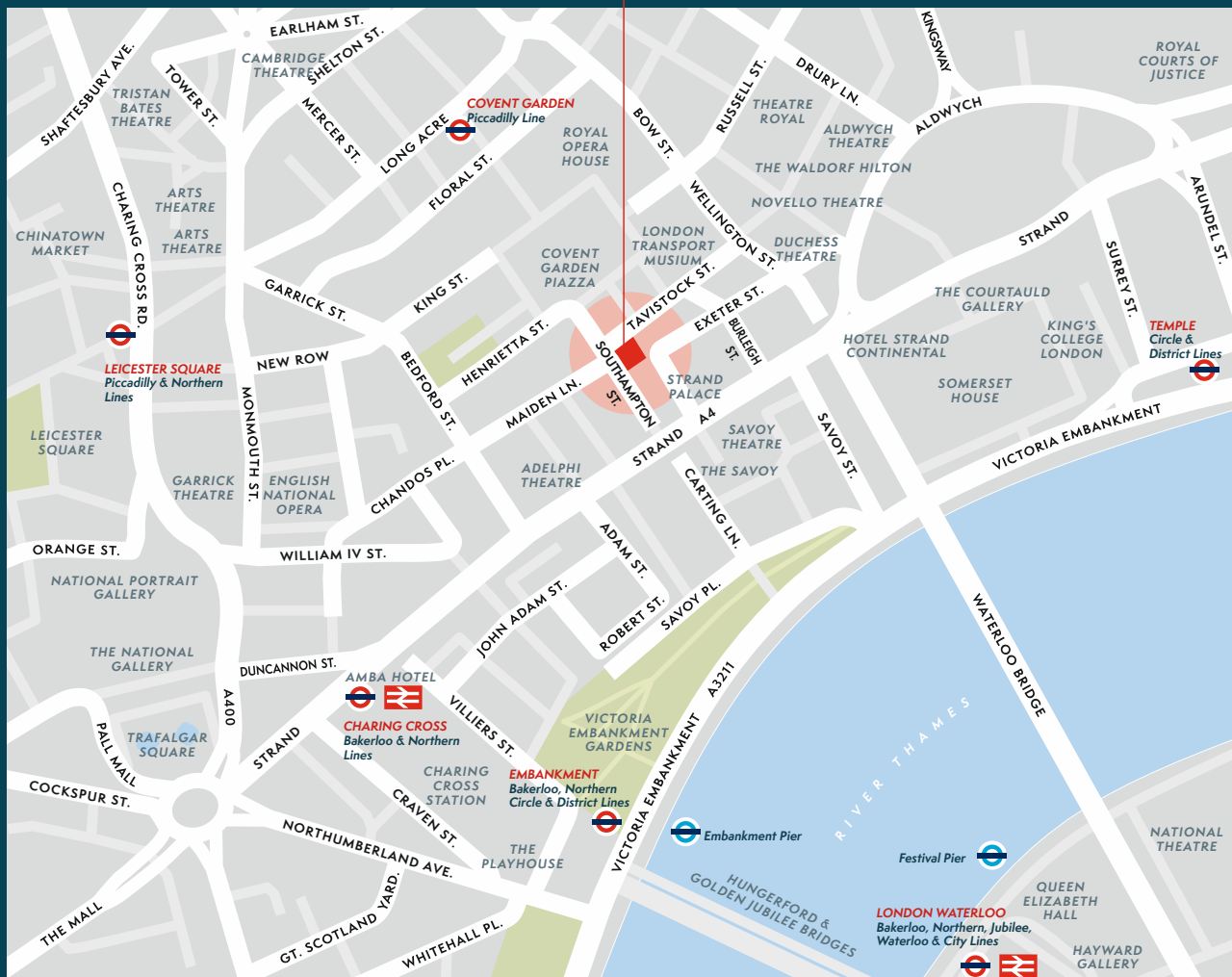
7th floor majority open plan offices





# TOWER HOUSE

10 SOUTHAMPTON STREET · COVENT GARDEN · CITY OF WESTMINSTER · LONDON · WC2E 7HA



Trafalgar Square



Covent Garden: a central axis of London culture, cuisine, arts and sophistication.



The Savoy

## TERMS

Full lease terms on application, subject to contract and financial status.

## BUSINESS RATES AND SERVICE CHARGE

To be advised.

These sales particulars do not form any part of a contract, the information contained herein is for guidance purposes only. All liability, in negligence or otherwise, for any loss arising from the use of these particulars is hereby excluded.

## FURTHER INFORMATION

For further information and appointments to inspect contact the letting agents Chris Thomas and Ed Mason

**T: 01753 839390 / 07770 768342** or email: [info@chthomas.com](mailto:info@chthomas.com)

