



Wellington
house

20 Queensmere
High Street · Slough · SL1 1DB



Wellington house

Location

Wellington House is prominently located in Slough Town Centre. Slough main line railway station, with a 18 minute express service to London Paddington, is just a short walk from the property. The building is well located for Junctions 5 and 6 of the M4 and Heathrow Airport lies just 7.5 miles to the east.



Description

Wellington House is one of the largest office buildings in Slough and offers air conditioned office space over five floors. The property has undergone a complete refurbishment in 2008 to provide bright modern office accommodation with excellent, secure on site car parking.

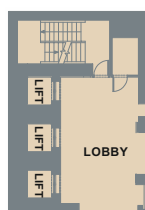


Town centre offices with excellent parking

- Air conditioned office suites
- Completely refurbished to a high standard
- Walking distance to Slough railway station
- On site car parking

4,100 sq ft - 44,300 sq ft
(381 sq m - 4,113 sq m)

TO LET



Typical Floor Plan



Floor Areas

■ Fifth floor	10,050 sq ft	(933 sq m)
■ Fourth floor	10,050 sq ft	(933 sq m)
■ Third floor	10,050 sq ft	(933 sq m)
■ Second floor	10,050 sq ft	(933 sq m)
■ First floor north suite	4,100 sq ft	(381 sq m)
Total	44,300 sq ft	(4,113 sq m)





Amenities

- Four pipe fan coil air conditioning
- LG7 lighting
- Directly above the town's main shopping centre
- Walking distance to mainline railway station
- Excellent on site secure parking
- 24 hour building management and security
- Full disabled access
- Excellent natural light
- Far reaching views.







www.gtdc.co.uk 01732 851 502



Wellington house

20 Queensmere
High Street, Slough SL1 1DB

Terms

Our client owns the freehold of Wellington House and is offering new leases on terms to be agreed. Full details of the rent, Business Rates and service charge are available on application.

Viewing

For further information or to arrange an inspection please contact:

Distances from the building

Heathrow Airport	7.5 miles
M4 - Junction 6	2.3 miles
M25 - Junction 15	4.2 miles
M3 - Junction 2	11.4 miles
Slough Railway Station	0.1 mile
Journey time to London Paddington	18 minutes

20 Grosvenor Hill
London W1K 3HQ

savills.com

savills

020 7499 8644

Lambert Smith
Hampton

01628 676001

57 HIGH STREET MAIDENHEAD SL6 1JT

You should be aware that the Code of Practice for Commercial Leases in England and Wales strongly recommends you seek professional advice from a qualified surveyor, solicitor or licensed conveyancer before agreeing or signing a business tenancy agreement. The Code is available through professional institutions and trade associations or through the website – www.commercialleasecode.co.uk

Disclaimer: Lambert Smith Hampton Group Limited (LSH) or Savills for themselves and for the Vendors or Lessors of the property whose agents they are give notice that: I) these particulars are given without responsibility of LSH or Savills or the Vendors or Lessors as a general outline only, for the guidance of prospective purchasers or tenants and do not constitute the whole or part of an offer or contract; II) LSH or Savills cannot guarantee the accuracy of any description, dimensions, references to condition, necessary permissions for use and occupation and other details contained herein and any prospective purchasers or tenants should not rely on them as statements or representations of fact but must satisfy themselves by inspection or otherwise as to the accuracy of each of them; III) no employee of LSH or Savills has any authority to make or give any representation or warranty or enter into any contract whatsoever in relation to the property; IV) VAT may be payable on the purchase price and/or rent, all figures are quoted exclusive of VAT, intending purchasers or lessees must satisfy themselves as to the applicable VAT position, if necessary by taking appropriate professional advice; V) LSH or Savills will not be liable, in negligence or otherwise, for any loss arising from the use of these particulars.